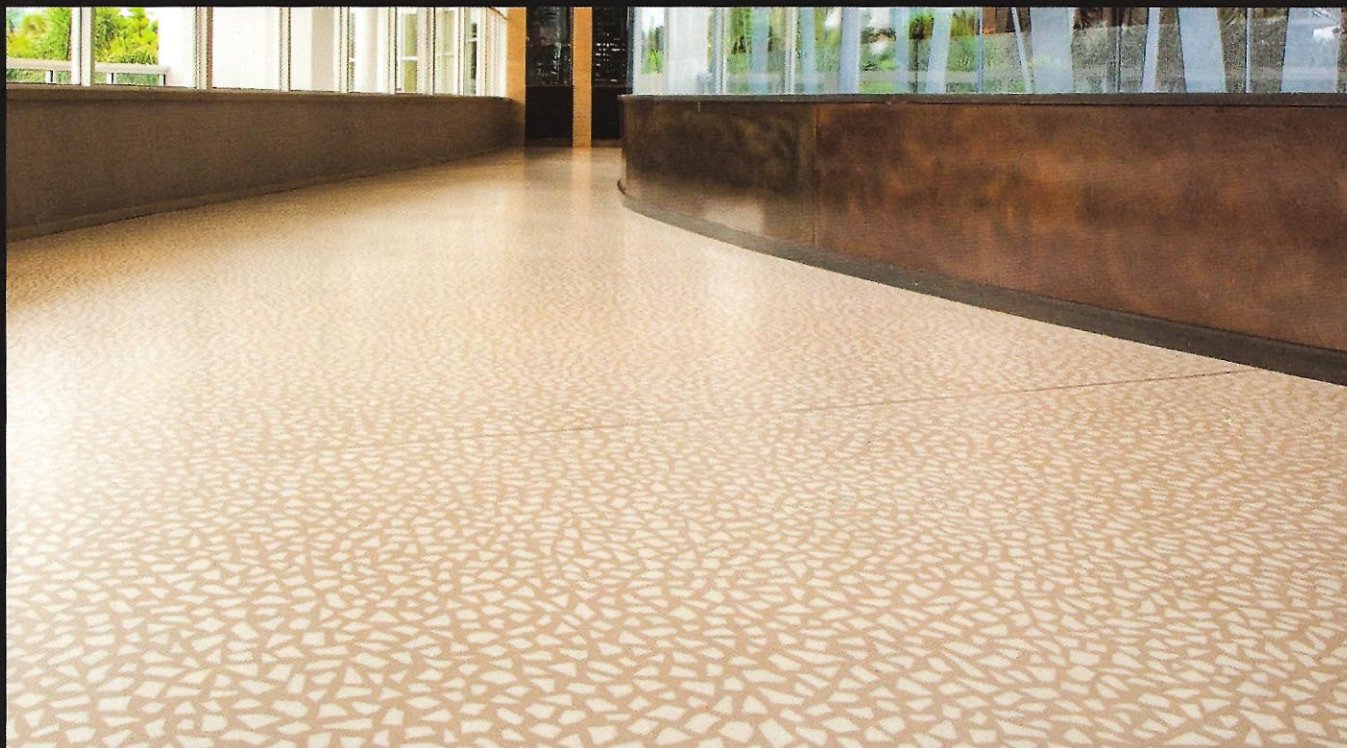




Fontainebleau Hotel & Resorts

Miami Beach, Florida



Architect
*BC Architects
Coral Gables, Florida*

Designer/Artist
*BC Architects
Coral Gables, Florida*

Terrazzo Contractor
*Artistic Surfaces
Pompano Beach, Florida*

General Contractor
*Turnberry Construction
Aventura, Florida*

Owner
*Turnberry Construction
Aventura, Florida*

Resin/Cement Supplier
*Key Resin Company
Batavia, Ohio*

Divider Strip Supplier
*Manhattan American
Terrazzo Strip Company
Staley, North Carolina*

The slab was floated with epoxy and sand to provide the proper elevations and flatness.

Every piece of glass aggregate was hand made by breaking glass tile. The pieces that were too small were culled out. A mock-up was done to determine the correct weight of aggregate necessary per square foot, to achieve a floor that matched the approved sample. After shotblasting, moisture mitigation was applied and all cracks were repaired. The slab was floated with epoxy and sand to provide the proper elevations and flatness. The white glass aggregate was adhered to the slab using epoxy resin to match the color of the field. Every piece was placed by hand, with a quality control supervisor to check the spacing of each hand set piece. Seven craftsmen placed the glass and a pour crew filled in with epoxy resin, pool mix and very fine marble aggregate. The grinding crew followed a few days later. The owner/contractor “loves” the final work and truly appreciates this one of a kind application.